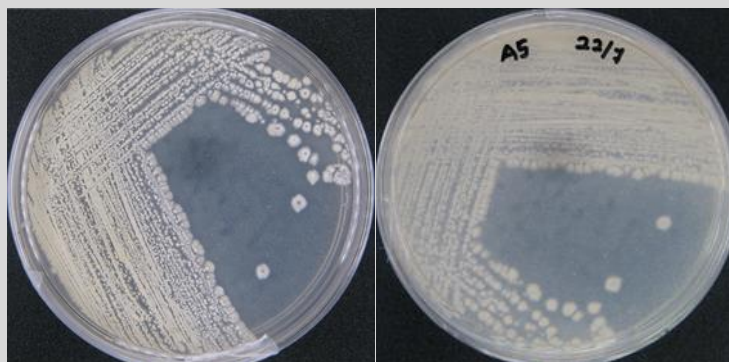


Streptomyces sp. CCB-PSK207

Colony morphology

White aerial mycelium; white substrate; irregular; filamentous; flat; dry; opaque; medium colony size



Gram-stain

Positive, filamentous bacterium

Isolation medium

Starch Casein Agar (SCA) + 50% Artificial sea water (ASW)

Growth condition

Aerobic; pH7; 28±2°C; 7-14 days

Sampling date, location, source

15 May 2014; Pulau Songsong, Kedah (5°48'46.5"N 100°17'44.8"E); Sediment

Biochemistry/ Physiology

No

16s rRNA gene analysis (EzBioCloud/NCBI)

Top-hit taxon *Streptomyces sundarbansensis*

Top-hit strain MS1/7(T)

Similarity (%) 99.85

Top-hit taxonomy Bacteria; Actinobacteria; Actinobacteria_c; Streptomyetales; Streptomycetaceae; Streptomyces

Publication

No

Application

No

Isolated by

Farizah Hanim bt Lat

Risk group

2

Additional information