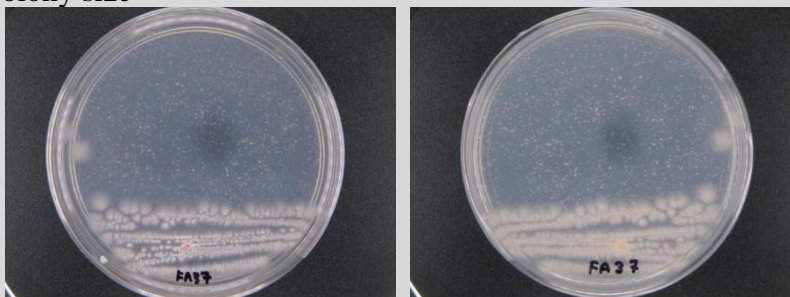


## ***Streptomyces* sp. CCB-MMP163**

### **Colony morphology**

White and light yellow and light grey aerial mycelium; light yellow substrate; irregular; undulate; flat; rough; translucent; medium colony size



### **Gram-stain**

Positive, filamentous bacterium

### **Isolation medium**

Starch Casein Agar (SCA) + 50% Artificial sea water (ASW)

### **Growth condition**

Aerobic; pH7; 28±2°C; 7-14 days

### **Sampling date, location, source**

15 May 2014; Matang Mangrove Forest, Perak (4.85496 N, 100.73495 E); Sediment

### **Biochemistry/ Physiology**

No

### **16s rRNA gene analysis(EzBioCloud/N CBI)**

Top-hit taxon *Streptomyces sundarbansensis*

Top-hit strain MS1/7(T)

Similarity (%) 99.85

Top-hit taxonomy Bacteria;Actinobacteria;Actinobacteria\_c;Streptomycetales;Streptomycetaceae;Streptomyces

### **Publication**

No

### **Application**

No

### **Isolated by**

Farizah Hanim bt Lat

### **Risk group**

2

### **Additional information**