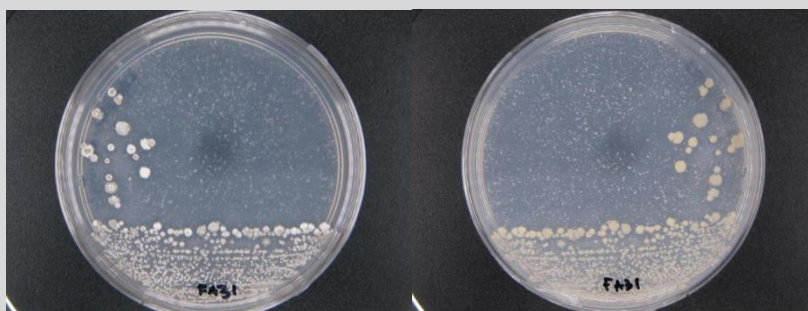


Streptomyces sp. CCB-MMP158

Colony morphology

Greyish white aerial mycelium; circular; entire; crateriform; dry; no pigmentation; opaque; small colony size



Gram-stain

Positive, filamentous bacterium

Isolation medium

Starch Casein Agar (SCA) + 50% Artificial sea water (ASW)

Growth condition

Aerobic; pH7; 28±2°C; 7-14 days

Sampling date, location, source

15 May 2014; Matang Mangrove Forest, Perak (4.85496 N, 100.73495 E); Sediment

Biochemistry/ Physiology

No

16s rRNA gene analysis(EzBioCloud/N CBI)

Top-hit taxon *Streptomyces tanashiensis*

Top-hit strain LMG 20274(T)

Similarity (%) 99.54

Top-hit taxonomy Bacteria;Actinobacteria;Actinobacteria_c;Streptomycetales;Streptomycetaceae;Streptomyces

Publication

No

Application

No

Isolated by

Farizah Hanim bt Lat

Risk group

2

Additional information