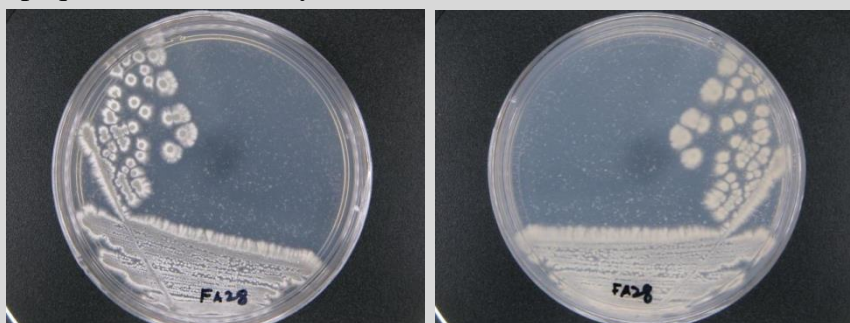


Streptomyces sp. CCB-KSK155

Colony morphology

Yellowish white aerial mycelium; filamentous; lobate; raised; dry; opaque; medium colony size



Gram-stain

Positive, filamentous bacterium

Isolation medium

Starch Casein Agar (SCA) + 50% Artificial sea water (ASW)

Growth condition

Aerobic; pH7; 28±2°C; 7-14 days

Sampling date, location, source

12 May 2014; Kuala Sala, Kedah (100.3546°E, 5.9737°N); Sediment

Biochemistry/ Physiology

No

16s rRNA gene analysis(EzBioCloud/N CBI)

Top-hit taxon *Streptomyces sundarbansensis*

Top-hit strain MS1/7(T)

Similarity (%) 99.85

Top-hit taxonomy Bacteria;Actinobacteria;Actinobacteria_c;Streptomycetales;Streptomycetaceae;Streptomyces

Publication

No

Application

No

Isolated by

Farizah Hanim bt Lat

Risk group

2

Additional information