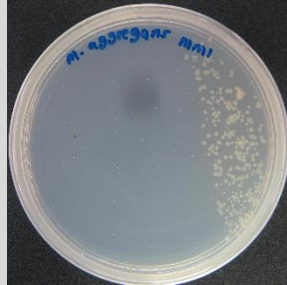


Microbulbifer sp. CCB-MM1

Colony morphology

White colony; 1 mm size; circular; undulate; raised; glistening; opaque, entire edge



Gram-stain

Negative rod

Isolation medium

Tryptone + 50% Artificial sea water (ASW) agar

Growth condition

Aerobic; pH7; 30±2°C; 16-24hrs

Sampling date, location, source

2 October 2014; Matang Mangrove Forest (4.85228 N, 100.55777 E); Mangrove estuarine sediment

Biochemistry/ Physiology

No

16s rRNA gene analysis(EzBioCloud/N CBI)

Top-hit taxon *Microbulbifer aggregans*

Top-hit strain CCB-MM1(T)

Similarity (%) 100

Top-hit taxonomy Bacteria;Proteobacteria;Gammaproteobacteria;Celi
lvibrionales;Microbulbiferaceae;Microbulbifer

Publication

Moh, T.-H., Lau, N.-S., Furusawa, G., & Amirul, A. A.-A. (2017). Complete genome sequence of *Microbulbifer* sp. CCB-MM1, a halophile isolated from Matang Mangrove Forest, Malaysia. *Standards in Genomic Sciences*, 12(1), 1–9. <http://doi.org/10.1186/s40793-017-0248-0>

Moh, T.-H., Furusawa, G., & Amirul, A. A.-A. (2017). *Microbulbifer aggregans* sp. nov., isolated from estuarine sediment from a mangrove forest. *International Journal of Systematic and Evolutionary Microbiology*, 67(10), 4089–4094. <http://doi.org/10.1099/ijsem.0.002258>

Application

No

Isolated by

Dinesh Balachandra

Risk group	1
Additional information	