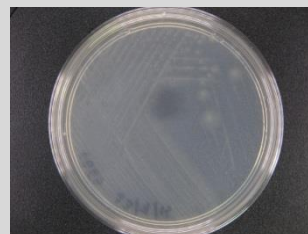


Marinobacter sp. CCB-SMP258

Colony morphology

Light peach colony; 1 mm size; circular; entire; raised; glistening; translucent



Gram-stain

Negative, rod

Isolation medium

Nutrient agar (NA) + 50% Artificial sea water (ASW)

Growth condition

Aerobic; pH 7; 28 ± 2 °C; 24-48 hrs

Sampling date, location, source

Seri Manjung, Perak

Biochemistry/ Physiology

No

16s rRNA gene analysis (EzBioCloud/N CBI)

Top-hit taxon *Marinobacter mobilis*

Top-hit strain CN46(T)

Similarity (%) 99.03%

Top-hit taxonomy Bacteria; Proteobacteria; Gammaproteobacteria; Alteromonadales; Marinobacter_f; Marinobacter

Publication

No

Application

No

Isolated by

Siti Nur Fatin binti Ahmad Kamal

Risk group

2

Additional information