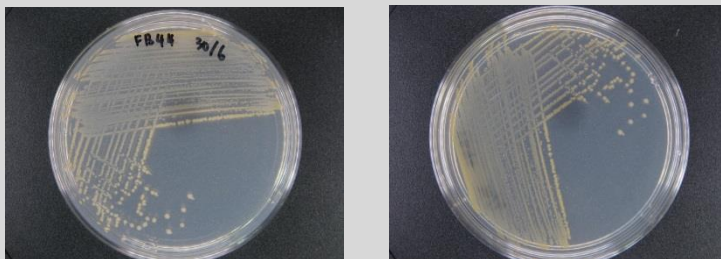


Exiguobacterium sp. CCB-MMP238

Colony morphology

Orange colony; 2 mm size; circular; entire; raised; glistening; opaque



Gram-stain

Positive, rod

Isolation medium

Nutrient agar (NA) + 50% Artificial sea water (ASW)

Growth condition

Aerobic; pH 7; 28 ± 2 °C; 24-48 hrs

Sampling date, location, source

15 May 2014; Matang Mangrove Forest, Perak (4.85496°E, 100.73495°N); Sediment

Biochemistry/ Physiology

No

16s rRNA gene analysis (EzBioCloud/N CBI)

Top-hit taxon *Exiguobacterium profundum*

Top-hit strain 10C(T)

Similarity (%) 99.84%

Top-hit taxonomy Bacteria; Firmicutes; Bacilli; Bacillales; Exiguobacteriaceae; Exiguobacterium

Publication

No

Application

No

Isolated by

Siti Nur Fatin binti Ahmad Kamal

Risk group

2

Additional information