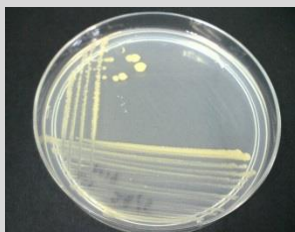


## *Exiguobacterium* sp. CCB-MMP220

### Colony morphology

Dark beige colony; 3 mm size; circular; entire; flat; smooth; glistening; translucent



### Gram-stain

Positive, rod

### Isolation medium

Nutrient agar (NA) + 50% Artificial sea water (ASW)

### Growth condition

Aerobic; pH 7; 28 ± 2 °C; 24-48 hrs

### Sampling date, location, source

15 May 2014; Matang Mangrove Forest, Perak (4.85496°E, 100.73495°N); Sediment

### Biochemistry/ Physiology

No

### 16s rRNA gene analysis (EzBioCloud/N CBI)

Top-hit taxon *Exiguobacterium profundum*

Top-hit strain 10C(T)

Similarity (%) 99.84%

Top-hit taxonomy Bacteria; Firmicutes; Bacilli; Bacillales; Exiguobacteriaceae; Exiguobacterium

### Publication

No

### Application

No

### Isolated by

Siti Nur Fatin binti Ahmad Kamal

### Risk group

2

### Additional information