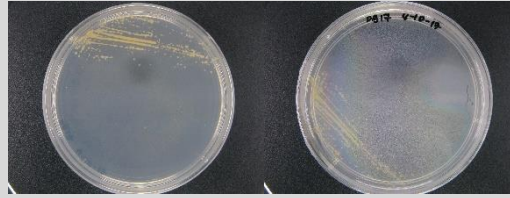


Erythrobacter sp. CCB-PB313

Colony morphology

Light orange; 1mm size; circular; entire; convex; smooth; glistening; opaque



Gram-stain

Positive, rod

Isolation medium

Marine agar (MA); Marine broth (MB)

Growth condition

Aerobic; pH7; 28±2°C; 24-48hrs

Sampling date, location, source

11 May 2016; Pulau Betong, Penang (N05°18.761' E111°13.8'); Seawater

Biochemistry/
Physiology

No

16s rRNA gene analysis(EzBioCloud/N CBI)

Top-hit taxon *Erythrobacter vulgaris*

Top-hit strain 022 2-10(T)

Similarity (%) 99.48

Top-hit taxonomy Bacteria;Proteobacteria;Alphaproteobacteria; Sphingomonadales;Erythrobacteraceae;*Erythrobacter*

Publication

No

Application

No

Isolated by

Diyana Tarmizi

Risk group

1

Additional information