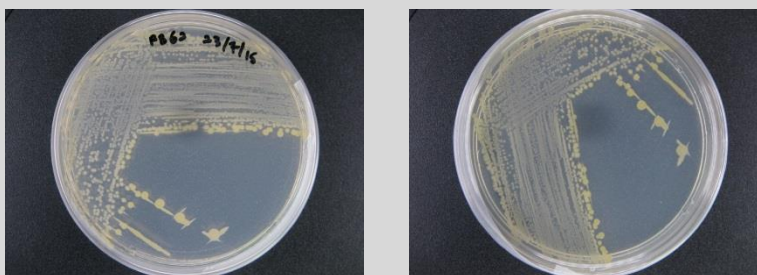


## *Bacillus* sp. CCB-SMP255

### Colony morphology

Dark beige colony; 2 mm size; circular; entire; flat; dry; opaque



### Gram-stain

Gram-variable, rod

### Isolation medium

Nutrient agar (NA) + 50% Artificial sea water (ASW)

### Growth condition

Aerobic; pH 7; 28±2°C; 24-48hrs

### Sampling date, location, source

Seri Manjung, Perak

### Biochemistry/ Physiology

No

### 16s rRNA gene analysis (EzBioCloud/N CBI)

Top-hit taxon *Bacillus aquimaris*

Top-hit strain

Similarity (%) 99%

Top-hit taxonomy Bacteria; Firmicutes; Bacilli; Bacillales; Bacillaceae; Bacillus

### Publication

No

### Application

No

### Isolated by

Siti Nur Fatin binti Ahmad Kamal

### Risk group

2

### Additional information