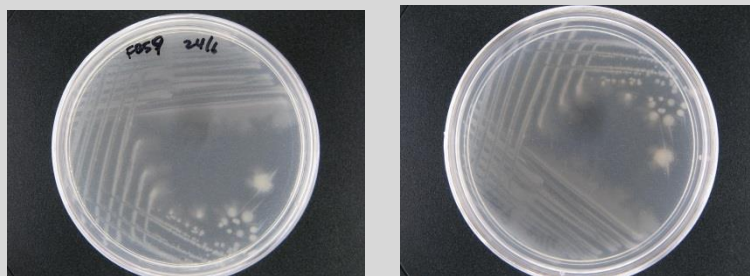


Bacillus sp. CCB-SMP252

Colony morphology

White colony; 5 mm size; irregular; flat; glistening; translucent



Gram-stain

Positive, rod

Isolation medium

Nutrient agar (NA) + 50% Artificial sea water (ASW)

Growth condition

Aerobic; pH7; 28±2°C; 24-48hrs

Sampling date, location, source

Seri Manjung, Perak

Biochemistry/ Physiology

No

16s rRNA gene analysis(EzBioCloud/N CBI)

Top-hit taxon *Bacillus altitudinis*

Top-hit strain 41KF2b(T)

Similarity (%) 100%

Top-hit taxonomy Bacteria;Firmicutes;Bacilli;Bacillales;Bacillaceae;Bacillus

Publication

No

Application

No

Isolated by

Siti Nur Fatin binti Ahmad Kamal

Risk group

2

Additional information