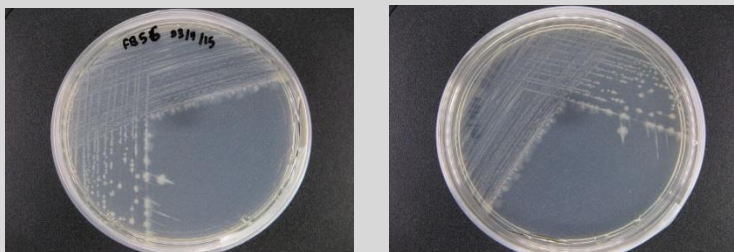


## ***Bacillus* sp. CCB-SMP249**

### **Colony morphology**

Beige colony; <1 mm size; irregular; flat; smooth; glistening; opaque



### **Gram-stain**

Positive, rod

### **Isolation medium**

Nutrient agar (NA) + 50% Artificial sea water (ASW)

### **Growth condition**

Aerobic; pH 7; 28±2°C; 24-48hrs

### **Sampling date, location, source**

Seri Manjung, Perak

### **Biochemistry/ Physiology**

No

### **16s rRNA gene analysis(EzBioCloud/N CBI)**

Top-hit taxon *Bacillus siamensis*

Top-hit strain KCTC 13613(T)

Similarity (%) 99.85%

Top-hit taxonomy Bacteria;Firmicutes;Bacilli;Bacillales;Bacillaceae;Bacillus

### **Publication**

No

### **Application**

No

### **Isolated by**

Siti Nur Fatin binti Ahmad Kamal

### **Risk group**

2

### **Additional information**