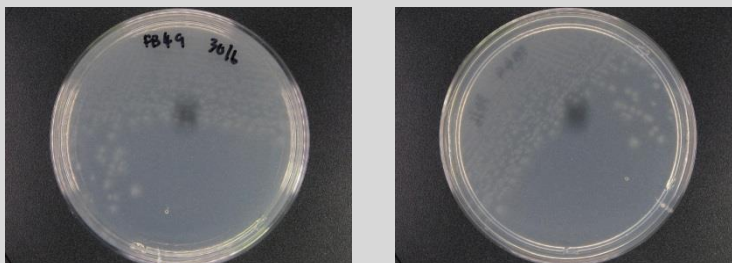


## **Bacillus sp. CCB-SMP243**

### **Colony morphology**

Brown colony; 3 mm size; circular; entire; flat; smooth; glistening; translucent



### **Gram-stain**

Positive, rod

### **Isolation medium**

Nutrient agar (NA) + 50% Artificial sea water (ASW)

### **Growth condition**

Aerobic; pH 7; 28 ± 2 °C; 24-48 hrs

### **Sampling date, location, source**

Seri Manjung, Perak

### **Biochemistry/ Physiology**

No

### **16s rRNA gene analysis (EzBioCloud/N CBI)**

Top-hit taxon *Bacillus cereus*

Top-hit strain ATCC 14579(T)

Similarity (%) 100%

Top-hit taxonomy Bacteria; Firmicutes; Bacilli; Bacillales; Bacillaceae; Bacillus

### **Publication**

No

### **Application**

No

### **Isolated by**

Siti Nur Fatin binti Ahmad Kamal

### **Risk group**

2

### **Additional information**