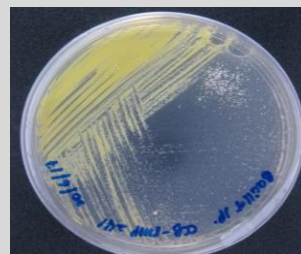
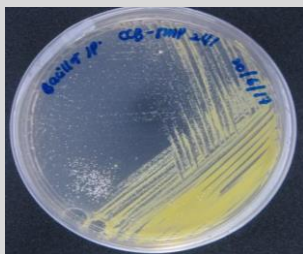


## *Bacillus* sp. CCB-SMP241

### Colony morphology

Yellow colony; 4 mm size; circular; entire; raised; smooth; glistening; transparent



### Gram-stain

Positive, rod

### Isolation medium

Nutrient agar (NA) + 50% Artificial sea water (ASW)

### Growth condition

Aerobic; pH 7; 28±2°C; 24-48hrs

### Sampling date, location, source

Seri Manjung, Perak

### Biochemistry/ Physiology

No

### 16s rRNA gene analysis(EzBioCloud/N CBI)

Top-hit taxon *Bacillus altitudinis*

Top-hit strain 41KF2b(T)

Similarity (%) 100%

Top-hit taxonomy Bacteria;Firmicutes;Bacilli;Bacillales;Bacillaceae;Bacillus

### Publication

No

### Application

No

### Isolated by

Siti Nur Fatin binti Ahmad Kamal

### Risk group

2

### Additional information