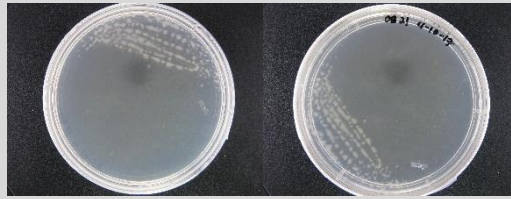


*Bacillus* sp. CCB-PB316

Colony morphology

White colony; small size; circular; curled; flat; rugose; opaque



Gram-stain

Positive, bacilli

Isolation medium

Marine agar (MA); Marine broth (MB)

Growth condition

Aerobic; pH7; 28±2°C; 24-48hrs

Sampling date, location, source

11 May 2016; Pulau Betong, Penang (N05°18.761' E111°13.8'); Seawater

Biochemistry/  
Physiology

No

16s rRNA gene analysis (EzBioCloud/N CBI)

Top-hit taxon *Bacillus tequilensis*

Top-hit strain KCTC 13622(T)

Similarity (%) 99.7

Top-hit taxonomy Bacteria; Firmicutes; Bacilli; Bacillales; Bacillaceae; *Bacillus*

Publication

No

Application

No

Isolated by

Diyana tarmizi

Risk group

1

Additional information