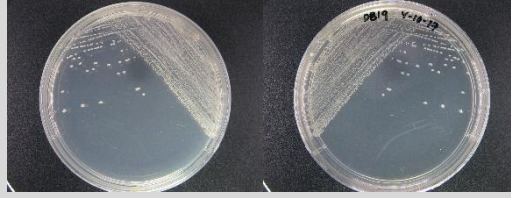


Bacillus sp. CCB-PB314

Colony morphology

Creamy colony; 2 mm size; circular; entire; convex; smooth; glistening; opaque



Gram-stain

Positive, rod bacilli

Isolation medium

Marine agar (MA); Marine broth (MB)

Growth condition

Aerobic; pH7; 28±2°C; 24-48hrs

Sampling date, location, source

11 May 2016; Pulau Betong, Penang (N05°18.761' E111°13.8'); Seawater

Biochemistry/
Physiology

No

16s rRNA gene
analysis(EzBioCloud/N
CBI)

Top-hit taxon *Bacillus halosaccharovorans*

Top-hit strain E33 (T)

Similarity (%) 98.22

Top-hit taxonomy Bacteria; Firmicutes; Bacilli; Bacillales; Bacillaceae; *Bacillus*

Publication

No

Application

No

Isolated by

Diyana Tarmizi

Risk group

1

Additional information