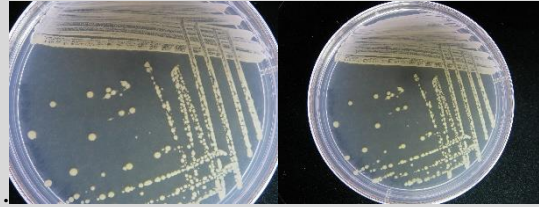


Bacillus sp. CCB-PB306

Colony morphology

White non-pigmented colony; 2-3mm; round; irregular; flat; dull; opaque



Gram-stain

Positive, rod bacilli

Isolation medium

Marine agar (MA); Marine broth(MB)

Growth condition

Aerobic;pH7;28±2°C; 24-48hrs

Sampling date, location, source

11 May 2016; Pulau Betong, Penang (N05°18.761' E111°13.8'); Seawater

Biochemistry/
Physiology

No

16s rRNA gene analysis(EzBioCloud/N CBI)

Top-hit taxon *Bacillus xiamenensis*

Top-hit strain HYC-10(T)

Similarity (%) 99.93

Top-hit taxonomy Bacteria; Firmicutes; Bacilli; Bacillales; Bacillaceae; *Bacillus*

Publication

No

Application

No

Isolated by

Diyana Tarmizi

Risk group

1

Additional information